

**6th Annual South Glens Falls
John Killian “K-DAWG”
Memorial XC Invitational
Saturday, September 29, 2018
Moreau Recreational Park, South
Glens Falls, NY**



Location: Moreau Recreational Park, South Glens Falls, NY

Directions From Interstate 87 Exit 17N: (map included – Last Page)

Course: Flat, open fields, wooded trails, and a fast 3 Mile course

NEW for 2018: Timing done by Underdog Racing

Entry Fee:

- New School Discount \$125!
- Early Bird Veteran Team Entry – Entry Before September 14,2018 - **\$125!!**

After September 14, 2018

- **\$150 for both boys and girls teams, \$100 if no Varsity entries (\$75 for mod teams only)**

Concession Stand: Refreshments, food, and t-shirts (\$20) will be sold. Possible discounted shirts (last years).

Team/Scoring: ENTRIES: Varsity races are limited to 7 runners while other races may have unlimited entries. JV race may change depending on entries. Your top 5 will score and your top 7 will displace other runners. Timing will be computerized.

Awards: Individual medals will be handed out in the chute at the conclusion of each race. Medals will be given to the top 30 in each race. Team Trophies (1st – 3rd places) will be able to be picked up upon completion of team scoring at the awards and results tent. **Give-A-ways!?!** Depending on sponsorships our goal is to give a “door prize” to every team in attendance. If we only get a few items, we will have a drawing for the prizes.

Tentative Race Schedule: Racing will start at 9:00 am. Race schedule will be determined on number of teams registered. We will email the final race schedule on September 25th - after the entry deadline.

Tentative Race Schedule:

- 9:00- Modified Girls** (*Unlimited entry*) (1.5 miles)
9:25- Modified Boys(*Unlimited entry*) (1.5 miles)
9:50- JV Girls (*Unlimited entry*) (3.00 miles)
10:20-JV Boys(*Unlimited entry*) (3.00 miles)
10:50-Varsity Girls (*7 team member limit*) (3.00 miles)
11:20-Varsity Boys (*7 team member limit*) (3.00 miles)

Contact Information:

Paul Stoutenger, South Glens Falls
CELL # 518-796-5265 (call or text)
School # 518-796-5265 ext. 11503
Email: stoutengerpa@sgfcsd.org

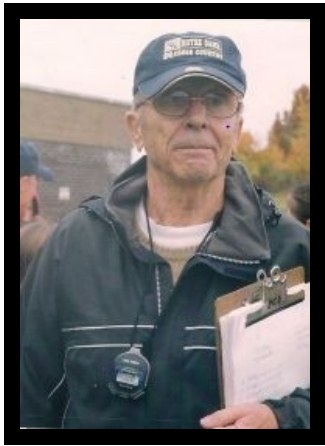
Make checks or school vouchers payable to: **South Glens Falls Booster Club**

Send to: Or Email to stoutengerpa@sgfcsd.org

Paul Stoutenger
(c/o Maureen O’Sullivan)
South Glens Falls High School
42 Merritt Rd
South Glens Falls, NY 12803

Entry Deadline: Monday Sept. 26th, 2018

Roster Deadline: Emailed to stoutengerpa@sgfcsd.org in www.milesplit.com by Wed. Sept 26th , 2018



**5th Annual South Glens Falls
John Killian "K-DAWG"
Memorial XC Invitational
Saturday, September 30, 2017
Moreau Recreational Park, South
Glens Falls, NY**



Entry Form

Complete and return this form as soon as possible

Checks or School vouchers made payable to:

South Glens Falls Booster Club

Entry Fee:

- New School Discount \$125!
- Early Bird Veteran Team Entry – Entry Before September 14, 2018 - **\$125!!**

After September 14, 2018

- \$150 for both boys and girls teams, \$100 if no Varsity entries (\$75 for mod teams only)
- Complete and return attached form as soon as possible.
-

School _____

School Classification _____

Coach (girls) _____

Coach (boys) _____

School phone _____

Home or cell phone _____

Fax # _____

Email address _____

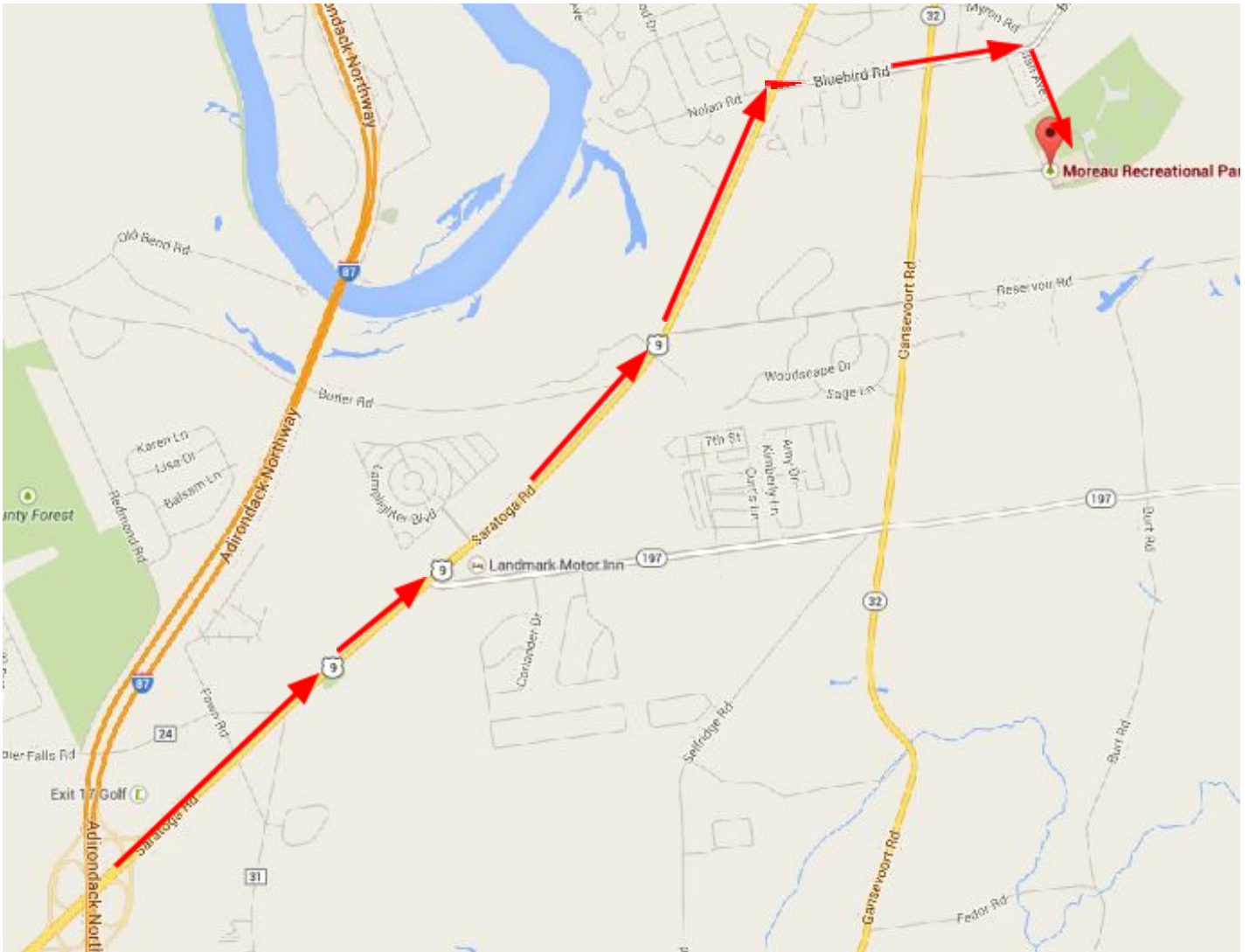
Send to: Or Email stoutengerpa@sgfcsd.org

Paul Stoutenger
(c/o Maureen O'Sullivan)
South Glens Falls High School
42 Merritt Rd
South Glens Falls, NY 12803

Entry Deadline: Monday Sept. 26th, 2018

Roster Deadline:

Emailed to stoutengerpa@sgfcsd.org in www.milesplit.com by Wed. Sept 26th , 2018



Directions From Interstate 87 Exit 17N: Take exit 17N from Interstate 87

(Adirondack Northway) to merge onto U.S. 9 N/Saratoga Road toward South Glens Falls. Continue to follow U.S. 9 N for approximately 3.8 miles. Turn right onto Bluebird Road and follow for approximately 0.8 miles. Before Moreau Elementary School turn right onto Jan Ave.